

Post Covid – Severe Ileitis

Fayadh M^{1*}, Awadh S², Ibrahim O³, Tawfeeq KA⁴ and Joshi P⁵

¹Gastroenterology Department – Advanced Center for Daycare Surgery, Abu Dhabi UAE

²Gastroenterology Department – Advanced Center for Daycare Surgery, Abu Dhabi UAE

³Radiology Department – Advanced Center for Daycare Surgery, Abu Dhabi UAE

⁴Surgery Department Advanced Center for Daycare Surgery, Abu Dhabi UAE

⁵Laboratory Department – NRL Abu Dhabi UAE

*Corresponding author:

Makki Fayadh,
Gastroenterology Department – Advanced Center for
Daycare Surgery, Abu Dhabi UAE,
E-mail: makkih@fayadh.com

Received: 19 Nov 2022

Accepted: 26 Dec 2022

Published: 03 Jan 2023

J Short Name: JJGH

Copyright:

©2022 Fayadh M, This is an open access article distributed under the terms of the Creative Commons Attribution License, which permits unrestricted use, distribution, and build upon your work non-commercially.

Keywords:

BCHE, Stomach Adenocarcinoma, Prognosis, Tumor-infiltrating Immune Cells, Mutation

Citation:

Fayadh M. Post Covid – Severe Ileitis. J Gastro Hepato. V9(14): 1-4

1. Abstract

Enteritis as the only manifestation of (COVID-19) in adolescents without features of multisystem syndrome in children (MIS-C) or a prior history of inflammatory bowel disease (IBD) is presented.

We report an adolescent patient (an 18-year-old male) presenting to tertiary-care centers in the ACDS United Arab Emirates with severe enteritis as the only manifestation of post COVID-19 (SARS-CoV-2) infection.

2. Introduction

Diagnostic IBD practice has been affected by COVID-19, with >50% of new diagnoses not having endoscopy in a UK nationwide study [1]. In children COVID 19 usually produces mild respiratory symptoms. However, in a rare subset of pediatric patients a severe post-infectious hyper inflammatory syndrome may arise termed multisystem inflammatory syndrome in children (MIS-C). Gastrointestinal manifestations are particularly common and may mimic other gastrointestinal infections or inflammatory bowel disease [2]. There is a paucity of literature describing the histological features of intestinal inflammation in MIS-C [3].

3. Case Report

An 18-year-old male with no significant past medical history presented to our facility (ACDS) August 2022 with 6 weeks' history of acute onset of severe epigastric and lower abdominal pain, nausea, and one

episode of vomiting, loose bowel motion 1-2 times a day, back ache, sore throat, gases and distension, milk intolerance, chest pain.

Clinically temperature of 36.5°C, heart rate of 100 beats per minute, respiratory rate of 20 breaths per minute. Abdominal examination demonstrated a non-distended abdomen with guarding and tenderness in the epigastric region and below the umbilicus (more on the right lower quadrant). Patient has history of Covid-19 infection (last Jan 2022) more than 6 months after infection.

4. Investigations

Laboratory showed repeatedly high Calprotectin 869 > 1000, CRP high 14.3, Anti-SARS-CoV-2 S1 IgG Quant 40000.0, Anti-SARS-CoV-2 S1 IgG positive, normal < 50. C ANCA negative, ASCA IgA Positive 84.7, ASCA IgG Positive 240. 2, CMV PCR negative. The patient's nasopharyngeal swab for SARS-CoV-2 RT-PCR was negative.

Chest radiographs were normal, (Figure 1). CT with no contrast showed stag horn calculi both kidneys. (Figure 2 A & B) Ultrasound abdomen and pelvis shows in both longitudinal (A) and transverse (B) section shows mural thickness of tubular structure in the right lower abdominal quadrant (appendicitis versus ileitis) (Figure 4) Computed tomography (CT) scan of the abdominal pelvis (Figure 3) Mural thickness of cecum and terminal ileum (dotted red) normal appendix (dotted green)

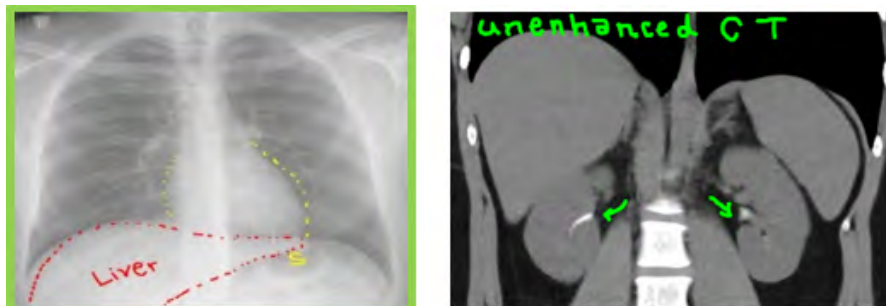


Figure 1: CT with no contrast showed stag horn calculi both kidneys

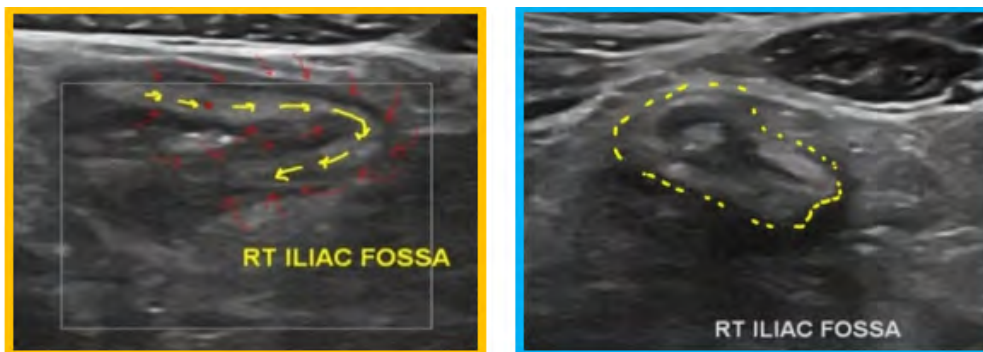


Figure 2A & B: Ultrasound abdomen and pelvis shows in both longitudinal (A) and transverse (B) section shows mural thickness of tubular structure in the right lower abdominal quadrant (appendicitis versus ileitis).

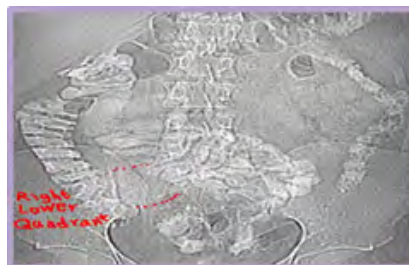


Figure 3: Mural thickness of cecum and terminal ileum (dotted red) normal appendix (dotted green)

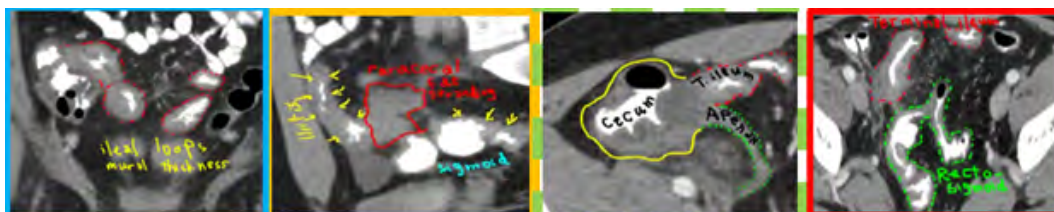


Figure 4: Multiple ileal loops (red rings) and recto sigmoid dotted green) mural thickness

4.1. CT Sagittal View Shows

Para-cecal fat stranding (red rectangle) + terminal ileum and sigmoid colon mural thickness (Yellow arrows) (Figure 5, 6 & 7,8), circumferential mucosal thickness of ileal loops (dotted red rings) Multiple ileal loops (red rings) and recto sigmoid dotted green) mural thickness, Gastroscopy showed multiple tiny erosions, HP positive, Colonoscopy shows: Severely ulcerated ileo-cecal valve and terminal ileum, Gastric Biopsy showed helicobacter pylori associated gastritis with intestinal metaplasia, Ileal Biopsy showed chronic Ileitis, moderate activity, normal colonic biopsies

The MRI study (Figures 9, 10, &11) with intravenous Gadolinium

contrast showed: MRI T2 sequence: (Figure 9)

Circumferential mural thickness of terminal ileum (yellow arrows); para-ileal fluid and fat stranding (F)

MRI STIR sequence shows: abnormal high STIR signal with fat stranding in right iliac fossa region; representing advanced inflammatory process. MRI post contrast shows: Enhancing ileal loops in post gadolinium study consistent with inflammation. Neck ultrasound for thyroid gland (Figure 12), It shows extra-thyroid extension (ETE) nodule in the left lobe with macrocalcification, which has mixed cystic and solid (hypoechoic) composition; consistent with TIRADS [4-8]. FNA confirmed the presence of Hurthle cell.

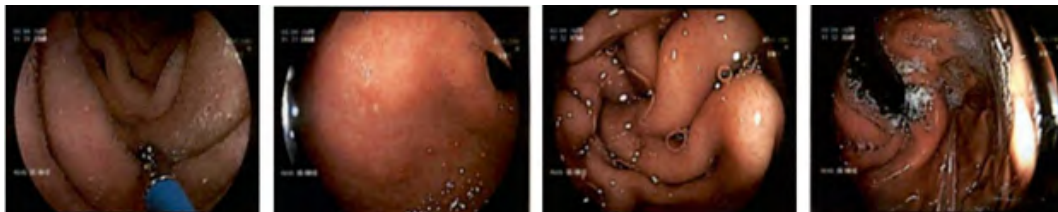


Figure 5: Gastroscopy showed multiple tiny erosions, HP positive

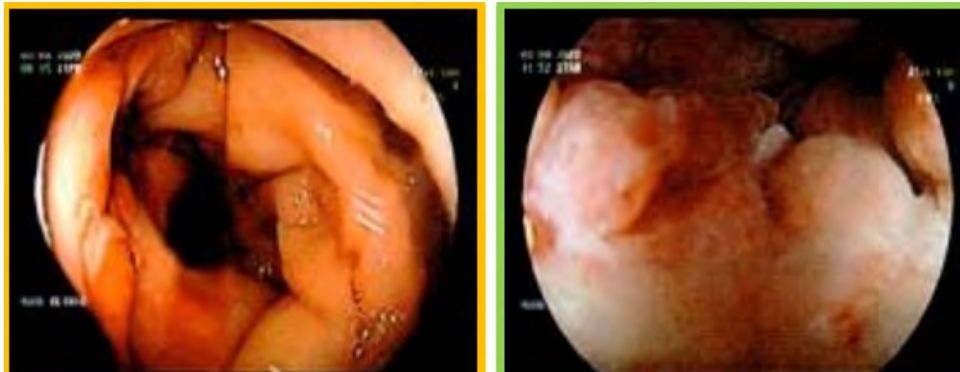


Figure 6: Gastric Biopsy showed helicobacter pylori associated gastritis with intestinal metaplasia, Ileal Biopsy showed chronic Ileitis, moderate activity, normal colonic biopsies

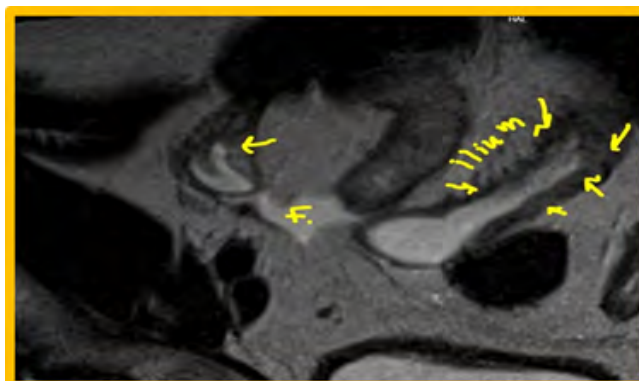


Figure 7: MRI STIR sequence shows: abnormal high STIR signal with fat stranding in right iliac fossa region; representing advanced inflammatory process

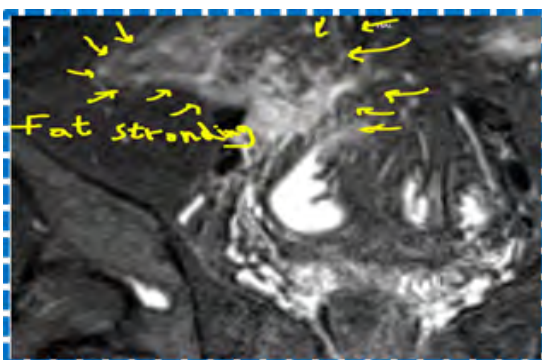


Figure 8:

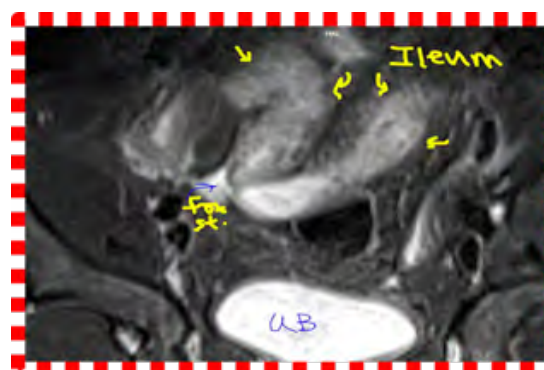


Figure 9: MRI post contrast shows: Enhancing ileal loops in post gadolinium study consistent with inflammation

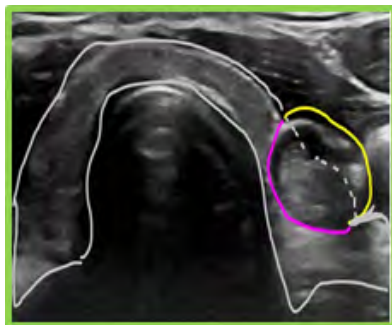


Figure 10:

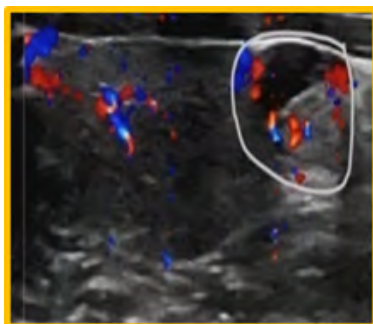


Figure 11:



Figure 12: FNA confirmed the presence of Hurthle cell

5. Discussion

Ileitis is most often caused by Crohn's disease; however, infectious diseases, vasculitis, ischaemia and spondyloarthropathies can be associated with ileitis. There have been a few reports of new IBD in adolescents after or concurrent COVID-19 infection [9-11]. SARS-CoV-2 is known to bind Angiotensin-converting enzyme-2 receptor on intestinal epithelial cells, causing overproduction of pro inflammatory cytokines, promoting intestinal inflammation [9-11]. Dysregulated immune response from SARS-CoV-2 will develop an intense intestinal inflammation, triggering onset of IBD [9-11]. Our patient has not had any evidence of IBD but the presence of positive ASCA ANCA and the stag horn calculi in the kidneys may point to a sub-clinical disease uncovered by COVID19 infection.

6. Conclusion

A previously healthy patient presented with abdominal pain 6 weeks after COVID 19 infection discovered to have severe ileitis associated with gastric helicobacter pylori infection and bilateral kidney stag horn calculi and thyroid nodules that showed Hurthle cell tumor. The

patient was treated with budesonide and azathioprin. Ustekunamab was started with good response. A positive ANCA and ASCA may point to susceptibility to develop Crohn's disease triggered by COVID 19 virus. Awareness is needed to recognize the non-respiratory manifestations of COVID 19 infection.

7. Consent

Consent was obtained from the patients as there are no patient identifiable data included in this case report.

8. Conflicts of Interest

The author does not have any conflicts of interest to declare.

References

1. Ashton JJ. Impact of COVID-19 on diagnosis and management of pediatric inflammatory bowel disease during lockdown: a UK nationwide study. *Archives of Disease in Childhood*. 2020; 105: 1186-1191.
2. Gomez IJA, Lopez PP, Duque DC. Abdominal manifestation of multisystem inflammatory syndrome in children. *J Pediatr Surg Case Rep*. 2021; 74: 102042.
3. Sahn B, Eze OP, Edelman MC. Features of intestinal disease associated with COVID-related multisystem inflammatory syndrome in children. *J Pediatr Gastroenterol Nutr*. 2021; 72: 384.
4. Miller A, Cantor P, Zachariah D, Ahn M. Gastrointestinal symptoms as a major pre-presentation component of an ovel multi system in flammatory syndrome in children that is related to coronavirus disease2019: a single center experience of 44 cases. *Gastroenterology*. 2020; 159(4): 1571.e2-1574.e2.
5. Cannon J. The Significance of Hürthle Cells in Thyroid Disease. *Oncologist*. 2011; 16(10): 1380-1387.
6. Centers for Disease Control and Prevention (CDC), Health Advisory on Multisystem Inflammatory Syndrome in Children(MIS-C) Associated with Coronavirus Disease 2019.
7. Riphagen S, Gomez X, Gonzales-Martinez C. Hyper inflammatory shock in children during COVID-19 pandemic. *Lancet*. 2020; 395(10237): 1607-1608.
8. Royal College of Paediatrics and Child Health Guidance, Paediatric Multi system Inflammatory Syndrome Temporally Associated with COVID-19, Royal College of Paediatrics and Child Health Guidance, London, UK, 2020.
9. Verdoni L, Mazza A, Gervasoni A. An outbreak of severe Kawasaki-like disease at the Italian epicentre of the SARS-CoV-2 epidemic: an observational cohort study. *Lancet*. 2020; 395(10239): 1771-1778.
10. Whittaker E, Bamford A, Kenny J. Clinical characteristics of 58 children with a pediatric inflammatory multi-system syndrome temporally associated with SARS-CoV-2. *JAMA*. 2020; 324(3): 259.
11. Tong CW, Jiwane A. A complicated case of terminal ileitis post-COVID-19 infection requiring bowel resection. *Journal of Surgical Case Reports*. 2022; 10: rjac457.